



DEVA

THEME PARKS





DEVA

DEVA is a multifunctional audio/video device that enables audio messaging and video acquisition. It is equipped with various sensors, such as microphone, presence sensor and accessories such as the LED light. The optimized power consumption allows days of autonomy thanks to its internal rechargeable battery.

Easy to install and configure, DEVA finds its natural place outdoor, also thanks to its weather-resistant case, in theme parks such as:

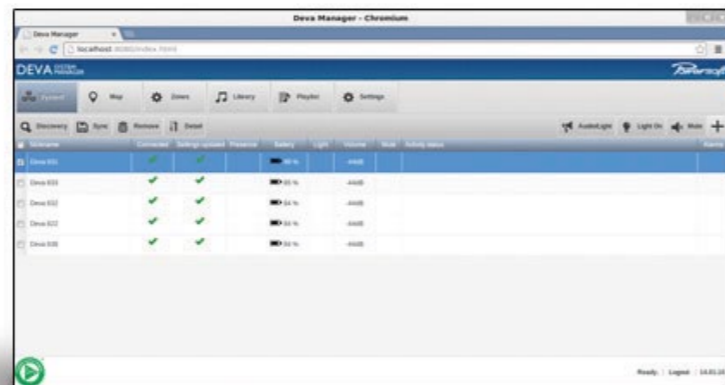
- ▶ Naturalistic
- ▶ Water
- ▶ Adventure
- ▶ Amusement
- ▶ Games
- ▶ History and Art

MAIN CHARACTERISTICS

- ▶ Multifunctional audio/video device
- ▶ Data communication
 - ✓ short range: wireless (Wi-Fi) or cabled (Ethernet)
 - ✓ long range: GSM/GPRS, or UMTS
- ▶ Sensors: GPS, microphone, presence, SOS button
- ▶ LED light
- ▶ Days of battery autonomy, via rechargeable battery and solar panel
- ▶ Virtually zero installation costs
- ▶ Weather-resistant for permanent outdoor use
- ▶ Possibility to be interfaced with RFID detector associated with the visitor's ticket

CONTROL SOFTWARE

- ▶ Remote control for custom configuration and tasks
- ▶ Management of single units and/or in groups
- ▶ Scheduled tasks
- ▶ On-event function activation and real-time monitoring and control
- ▶ Management of alarm states



DEVA can explain the modalities of execution and the rules of a given attraction, and it can play an audio playlist and announcements.

When installed in key points DEVA can take snapshots of participants in the most exciting moments, and then show them on a TV screen or print them as a souvenir.

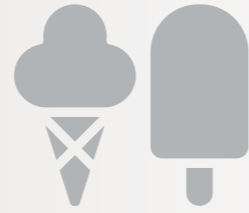
1

ATTRactions

- ▶ Multi-lingual info point
- ▶ Background music
- ▶ Adverts
- ▶ Photo capture
- ▶ Announcements
- ▶ Audio for interactive attractions

2

ENTERTAINMENT



- ▶ Background music
- ▶ Adverts
- ▶ Multi-lingual info point

DEVA can play high quality audio or ambience sounds, alternating them with adverts and security announcements in different languages.



DEVA can be used for safety as an SOS point, allowing the connection to a Control Room to call the intervention of emergency personnel. Moreover it can make announcements to track lost visitors and children.



3

SERVICE



- ▶ Background music
- ▶ Intervention request
- ▶ Communication: emergency/evac
- ▶ Announcements to find lost visitors

| | | |
|--------------------------------------|--|--|
| Audio | | |
| Sources | Streaming from remote microphone Playback from internal SD card Playback from USB key FM receiver | |
| Interface Module | 1 x 8" wide-range loudspeaker | |
| Frequency response | 100 Hz - 16 kHz +/-3dB | |
| Max sound pressure level | 115 dB/m | |
| Amplifier | Highly efficient Powersoft Class D circuitry | |
| Memory | 4 GB SD Card; remotely manageable playlist | |
| Lightning | | |
| LED | High-power white LED, appr. 540 lm, appr. 35° coverage, dimmable | |
| Photo e Video | | |
| Photo resolution | 720 x 576 pixels | |
| Video resolution | 320 x 240 pixels 10 fps (opzionale) | |
| Power Management | | |
| Power supply | 35 - 50 W / 18 V External solar panel | |
| and/or | PoE, PoE+, via RJ45 | |
| and/or | 18V 10W external power supply | |
| Battery | Standard sealed battery 12Ah 12V | |
| Min. light for solar charging | 50 W/m ² , AM1.5 | |
| Operating times (without recharging) | Stand-by: more than 14 days. Audio: appr. 50 hours. Light appr. 20 hours | |
| Communication | | |
| Wireless | WiFi - Standard IEEE 802.11 a,b,g,n,d, 2.4 and 5 GHz Bluetooth | |
| Wired | Ethernet 100 Mbit/s, PoE, via internal RJ45 port. USB 2.0, via internal port | |
| Long range connection | GSM/GPRS/UMTS | |
| Sensors | | |
| Presence | Infrared | |
| Other sensors | SOS button (optional) | |
| Localization | High sensitivity GPS module | |
| Auxiliary Interfaces | | |
| Input / Output | 1 x auxiliary power audio output 1 x line input 1 x RS485 1 x general purpose digital input 1 x output | |
| GUI | | |
| Web Browser | On-board web server for mobile clients via Wi-Fi connection | |
| Hardware | | |
| Case | Weather-resistant IP65 plastic case Operating temperature from -20 to +70 C° (-4 +158 F°) | |
| Dimensions and weight | (L x P x H) 300 x 300 x 450 mm / 11.81 x 11.81 x 17.71 in (appr.) 10 kg / 22 lb | |
| Accessories | | |
| Control software | DSM: PC software for multi-DEVA network management system (multi-zone assignment, multi levels users and authentication, alarms and events management,...) | |
| Solar panel | 35 W or 50 W | |
| Mounting | Wall or pole; steel; freely adjustable within a wide range | |



Powersoft S.p.A.
via Enrico Conti, 5
50018 Scandicci, Florence, ITALY
Tel: +39 055 735 0230
Fax: +39 055 735 6235
Email: sales@powersoft.it
Web: www.powersoft-audio.com

DO000196.00